



JEFF ROWLAND
DESIGN GROUP



- 2 **MODEL 925** MONO AMPLIFIER
- 3 **MODEL 825** STEREO AMPLIFIER
- 4 **MODEL 725** MONO AMPLIFIER
- 5 **MODEL 625** STEREO AMPLIFIER
- 6 **MODEL 525** STEREO AMPLIFIER
- 7 **MODEL 125** STEREO AMPLIFIER
- 8 **CORUS** PREAMPLIFIER
- 9 **CAPRI S2** PREAMPLIFIER
- 10 **CONTINUUM S2** INTEGRATED AMPLIFIER
- 11 **AERIS** DIGITAL-TO-ANALOG CONVERTER
- 12 **PSU** POWER STORAGE UNIT

MODEL 925

Mono Amplifier

OUTPUT POWER

430 watts @ 8 ohms/850 watts @ 4 ohms

FREQUENCY RESPONSE

5 Hz - 50 kHz

INPUT IMPEDANCE

40k ohms

THD + NOISE

0.004%, 20 Hz - 20 kHz

DAMPING FACTOR

> 1000, 20 Hz - 20 kHz

OVERALL GAIN

Switchable 26/32 dB

AMPLIFIER & POWER SUPPLY WEIGHT

160.4 lb / 73 kg (per channel)

TOTAL DIMENSIONS (H/W/D)

16.5" x 15.5" x 16.25" (per channel)

419mm x 394mm x 413mm



MODEL 825

Stereo Amplifier

OUTPUT POWER

400 watts @ 8 ohms/750 watts @ 4 ohms

FREQUENCY RESPONSE

5 Hz - 50 kHz

INPUT IMPEDANCE

40k ohms

THD + NOISE

0.004%, 20 Hz - 20 kHz

DAMPING FACTOR

> 1000, 20 Hz - 20 kHz

OVERALL GAIN

Switchable 26/32 dB

AMPLIFIER & POWER SUPPLY WEIGHT

160.4 lb / 73 kg

TOTAL DIMENSIONS (H/W/D)

16.5" x 15.5" x 16.25"
419mm x 394mm x 413mm



MODEL 725

Mono Amplifier

OUTPUT POWER

330 watts @ 8 ohms/650 watts @ 4 ohms

FREQUENCY RESPONSE

5 Hz - 350 kHz

INPUT IMPEDANCE

40k ohms

THD + NOISE

0.004% @ 1 kHz

DAMPING FACTOR

> 200, 20 Hz - 20 kHz

OVERALL GAIN

27 dB

AMPLIFIER WEIGHT

54 lb / 24.5 kg (per channel)

AMPLIFIER DIMENSIONS (H/W/D)

5.75" x 15.5" x 16.25"

146mm x 394mm x 413mm



MODEL 625

Stereo Amplifier

OUTPUT POWER

300 watts @ 8 ohms/550 watts @ 4 ohms

FREQUENCY RESPONSE

5 Hz - 350 kHz

INPUT IMPEDANCE

10k ohms

THD + NOISE

0.005% @ 1 kHz

DAMPING FACTOR

> 200, 20 Hz - 20 kHz

OVERALL GAIN

27 dB

AMPLIFIER WEIGHT

54 lb / 24.5 kg

AMPLIFIER DIMENSIONS (H/W/D)

5.75" x 15.5" x 16.25"

146mm x 394mm x 413mm



MODEL 525

Stereo Amplifier

OUTPUT POWER

250 watts @ 8 ohms/500 watts @ 4 ohms
950 watts @ 8 ohms BTL (bridge-tied load)

FREQUENCY RESPONSE

5 Hz - 70 kHz, -3 dB

INPUT IMPEDANCE

40k ohms

THD + NOISE

< 0.05%, 20 Hz - 20 kHz

DAMPING FACTOR

> 1000 @ 1 kHz

OVERALL GAIN

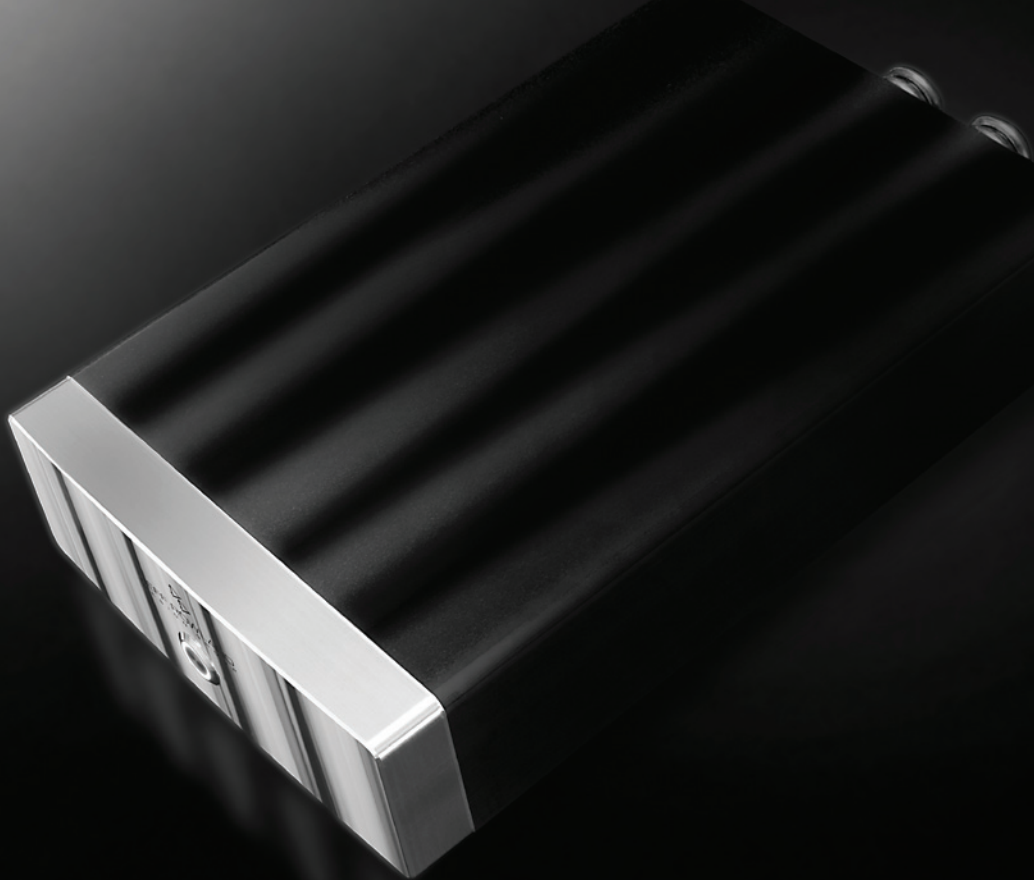
26/32 dB BTL

AMPLIFIER WEIGHT

14.5 lb / 6.6 kg

AMPLIFIER DIMENSIONS (H/W/D)

2.85" x 8.4" x 13"
72mm x 213mm x 330mm



MODEL 125

Stereo Amplifier

OUTPUT POWER

125 watts @ 8 ohms/250 watts @ 4 ohms

FREQUENCY RESPONSE

5 Hz - 130 kHz, -3 dB

INPUT IMPEDANCE

40k ohms

THD + NOISE

0.008% @ 1 kHz

DAMPING FACTOR

> 500 @ 1 kHz

OVERALL GAIN

26 dB

AMPLIFIER WEIGHT

7.8 lb / 3.5 kg

AMPLIFIER DIMENSIONS (H/W/D)

2.7" x 13.7" x 7.5"

68mm x 348mm x 190mm



CORUS

Stereo Preamplifier

OVERALL GAIN

Maximum 7 dB

+/- 20 dB programmable on each input

GAIN RANGE

99.5 dB, 199 equal increments

FREQUENCY RESPONSE

10 Hz - 300 kHz, -3 dB

INPUTS

4 pair balanced (XLR)

2 pair unbalanced (RCA)

OUTPUTS

2 pair balanced (XLR)

2 pair unbalanced (RCA)

PREAMPLIFIER & POWER SUPPLY WEIGHT

28 lb / 12.7 kg

PREAMPLIFIER DIMENSIONS (H/W/D)

3.9" x 15.5" x 12.3"

99mm x 394mm x 312mm



CAPRI S2

Stereo Preamplifier

OVERALL GAIN

14 dB

GAIN RANGE

99.5 dB, 199 equal increments

FREQUENCY RESPONSE

10 Hz - 350 kHz, -3 dB

INPUTS

2 pair balanced (XLR)

2 pair unbalanced (RCA)

1 pair unbalanced bypass (RCA)

OUTPUTS

1 pair balanced (XLR)

1 pair unbalanced (RCA)

PREAMPLIFIER WEIGHT

9.5 lb / 4.26 kg

PREAMPLIFIER DIMENSIONS (H/W/D)

2.6" x 13.7" x 6.2"

67mm x 350mm x 157mm



CONTINUUM S2

Integrated Amplifier

OUTPUT POWER

400 watts @ 8 ohms/800 watts @ 4 ohms

FREQUENCY RESPONSE

5 Hz - 70 kHz, -3 dB @ 8 ohms

THD + NOISE

0.05%, 20 Hz - 20 kHz

INPUTS

2 pair balanced (XLR)

2 pair unbalanced (RCA)

1 pair unbalanced bypass (RCA)

LINE OUTPUTS

1 pair balanced (XLR)

1 pair unbalanced (RCA)

WEIGHT

35 lb / 15.9 kg

DIMENSIONS (H/W/D)

5.3" x 15.5" x 15.0"

135mm x 394mm x 380mm



AERIS

Digital-to-Analog Converter

INPUTS

- 1 x USB - 24bit PCM up to 96kHz
- 2 x SPDIF - 24bit PCM up to 192kHz
- 1 x TOSLINK - 24bit PCM up to 192kHz

OUTPUTS

- 1 pair balanced (XLR)
- 1 pair unbalanced (RCA)

VOLUME CONTROL

70 dB range, plus 20 dB overdrive

TOTAL JITTER

< 1 picosecond RMS

THD + NOISE

< 0.0006% analog outputs

DAC & POWER SUPPLY WEIGHT

24.4 lb / 11 kg

DAC DIMENSIONS (H/W/D)

2.4" x 15.5" x 11.6"
61mm x 394mm x 294mm



PSU

Power Storage Unit

PERFORMANCE/COMPATIBILITY

Ultracapacitors provide the Aeris DAC and Corus Preamplifier a pure DC power source for expanded soundstage and musical presence.

ENERGY CAPACITY

233 farads (233,000,000 μF)

INPUT

85-264 Vac

OUTPUTS

1 pair DC outputs for Corus Preamplifier
2 auxiliary DC outputs

WEIGHT

27 lb / 15.9 kg

DIMENSIONS (H/W/D)

3.3" x 15.5" x 11"
84mm x 394mm x 279mm





Discover more at jeffrowland.com

Copyright © 2013 Jeff Rowland Design Group. All rights reserved.

